

Hach JOB Cal® Basic and JOB Cal® Plus

Overview

Hach JOB Cal is a Computerized Maintenance Management Software (CMMS) solution that provides easy-to-set up and easy-to-use maintenance tracking and scheduling for drinking water, wastewater and industrial markets. The software helps you improve the productivity and efficiency of your maintenance department with intuitive screens and easy access to information.

- **Hach JOB Cal Basic:** Provides a cost-effective maintenance scheduling solution. It automatically builds an interactive color-coded calendar for simplified management of your work order activities. In addition it includes many industry standard reports to help you manage your maintenance operations and provide business information.
- **Hach JOB Cal Plus:** Contains all the features of Basic, plus the ability to track purchasing, inventory, vendors and labor. It also integrates and displays equipment drawings, pictures and instructions. All data can be filtered and sorted in numerous ways using additional standard and custom reports.

Features and Benefits

Easy To Set Up

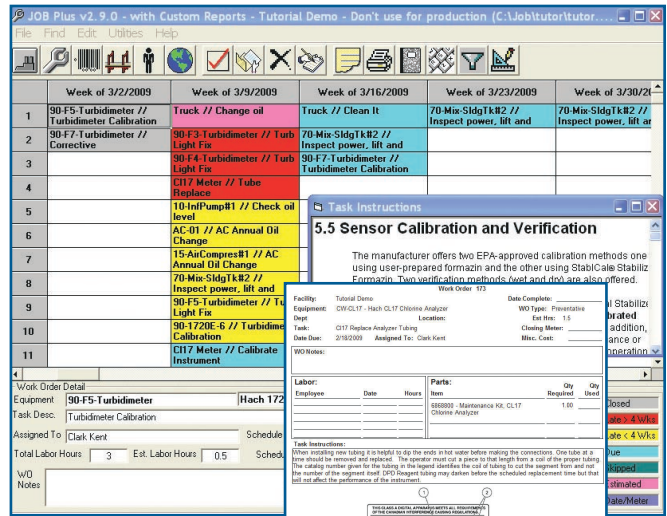
The system is easy and intuitive to set up— simply enter your equipment, tasks, and scheduling information. The system automatically generates work orders and updates the calendar. Set up a single database or use multiple databases to group and organize your maintenance operation.

Easy To Use

No more complicated procedures to determine your work schedule. The color-coded calendar immediately shows work orders that are open, completed and overdue. With the touch of a button, work orders can be marked as closed, rescheduled, deleted, skipped, printed, emailed, etc. You can also create corrective work orders as they happen. All job information is placed in a history file and can be accessed at any time.

Easy to Generate Maintenance Operations Reports

Get industry standard maintenance and business reports with the click of a mouse. Hach JOB Cal Basic includes many standard maintenance reports that make it easy for you to review your overall maintenance program. Built-in reports include equipment history (track equipment with the most activity), open work orders, equipment listings and many more.



See your schedules at a glance and generate your work orders automatically.

- GREY** = Completed (closed)
- RED** = Greater than 4 weeks overdue
- YELLOW** = Up to 4 weeks overdue
- CYAN** = To be completed
- TEAL** = Job skipped
- PINK** = Estimated by meter
- BLUE** = Due by date/meter

Expanded Functionality of Hach JOB Cal Plus

Hach JOB Cal Plus maintains the same core elements as Hach JOB Cal Basic, but adds:

Additional Tracking Capabilities

- **Inventory**— Track spare parts and assign parts to work orders
- **Purchasing**— Generate and track purchase orders for inventory items
- **Vendors**— Track vendors by item and cost
- **Labor**— Personnel can be assigned to jobs and recorded in the history report
- **Work Order Enhancements**— Each work order can include details including who worked on the job, what parts were used and the total job cost. Consumed parts are automatically removed from inventory.
- **Reports**— Additional standard reports plus the ability to create custom reports

Continued on next page.

DW = drinking water WW = wastewater municipal PW = pure water / power
 IW = industrial water E = environmental C = collections FB = food and beverage



Enhanced Productivity

- Graphics– Attach AutoCAD (dxf), bmp, jpg and gif files to work orders
- Calendar Enhancements– Filter and sort the calendar. Change your view for a single individual, piece of equipment, type of equipment, location, task or priority. For example, you can view only high priority jobs for a certain employee. The flexible calendar has multiple views.
- Task Enhancements– schedule jobs on a fixed basis (repeat job every XX days) or floating basis (repeat job XX days since the last time it was completed). Set priority of jobs and assign to personnel.
- Security– Define a full range of flexible security options and access for each user.
- Portability– Hach JOB Cal Plus Portable enables you to carry your work assignments, required materials, instructions, etc. within a handheld computer. Synchronize the work orders to your handheld, complete the work, confirm completion of the work and synchronize the data automatically to your Hach JOB Cal Plus database.
- Support Materials– Attach manuals, operating procedures, troubleshooting information, and graphics to work orders

System Interfaces

Interface your Hach JOB Cal Basic and Hach JOB Cal Plus to your SCADA system for automatic data collection. Schedule maintenance based on run times, start counts or meter readings from your SCADA system. Interfaces for the most common systems include:

- *GE Fanuc (Intellution)– iFIX, Historian, Proficy, Simplicity*
- *Rockwell Automation– RSVIEW, RSVIEWSE*
- *Wonderware– InTouch, Historian*
- *CiTect, Lookout, Plantscape and many others*

System Requirements and Ordering Information

For more information on the JOB Cal Basic or JOB Cal Plus, please call: 1-800-677-0067 or 505-892-6700 or visit: www.hach.com/im.

Also look for...

Hach Water Information Management Solution™ (Hach WIMS™)

Provides comprehensive and accurate information from all data sources, to allow more informed decisions. The software is available as a local, web-based, or enterprise solution with flexible payment options. (See Lit. # 2644)

Hach LAB Cal™

Designed specifically for the drinking water and wastewater systems, Hach LAB Cal provides simple and affordable sample scheduling and tracking solution for effective lab data management. The software builds a calendar that shows at-a-glance the status of all samples, tests to be run, chain of custody and more. (See Lit. # 2647)

Hach BOD Manager™

Reads data directly from the Hach HQ40d LBOD meter and automates your BOD bench sheets. It automatically calculates BOD, checks validity based on standard methods and user defined criteria, and securely stores the information. (See Lit. # 2646)

Lit. No. 2645 Rev 1

A102 Printed in U.S.A.

©Hach Company, 2010. All rights reserved.

In the interest of improving and updating its equipment, Hach Company reserves the right to alter specifications to equipment at any time.

At Hach, it's about learning from our customers and providing the right answers. It's more than ensuring the quality of water— it's about ensuring the quality of life. When it comes to the things that touch our lives...

Keep it pure.

Make it simple.

Be right.

For current price information, technical support, and ordering assistance, contact the Hach office or distributor serving your area.

In the United States, contact:

HACH COMPANY
P.O. Box 389
Loveland, Colorado 80539-0389
U.S.A.
Telephone: 1-800-677-0067
E-mail: iimsales@hach.com
www.hach.com/im



Be Right™